

Model 250 = 694

500 = 1094

OWNER'S MANUAL

MODEL NO.'s

~~CS-694~~ 250

~~CS-1094~~ 500

CSP-694

CSP-1094

⚠ CAUTION

For Safe Operation
Read Rules And
Instructions Carefully



STATEMENT OF POLICY

It is the policy of **Work saver, Inc.** to improve its products where it is possible and practical to do so. **Work saver, Inc.** reserves the right to make changes or improvements in design and construction at any time, without incurring the obligation to make these changes on previously manufactured units.

Broadcast Seeder/Spreader PTO DRIVEN - 3-PT. MOUNTED

Packing
Assembly & Mounting
Operating Instructions

Maintenance
Repair Parts

⚠ ATTENTION! SAFETY RULES

1. Read instruction manual and make sure all operators are knowledgeable on correct operation of equipment and familiar with the Safety Rules of Operation.
2. Never allow riders on equipment.
3. When operating on rough or uneven terrain, use extreme caution and a safe operating speed.
4. When spreading seed or fertilizer, always use safety goggles.
5. Never operate equipment when anyone is within 50 feet of seeder/spreader.

BEFORE OPERATING EQUIPMENT: If you have any questions regarding the proper assembly or operation, contact your dealer or representative.

WORKSAVER, INC.

P.O. Box 100, Litchfield, Illinois 62056-0100

(217) 324-5973



SPREADING CHART FOR FERTILIZERS

FERTILIZER TYPE	PTO SPEED (RPM)	SPREAD WIDTH IN FEET	TRACTOR SPEED (MPH)	QUANTITY TO BE SPREAD, IN POUNDS PER ACRE AT CONTROL LEVER SETTING INDICATED								
				1.5	2	2.5	3	3.5	4	4.5	5	5.5
Coarse Grain Fertilizers	540	40	2.5		97	139	246	414	516	640	789	935
			5		48	69	129	204	260	320	392	472
			7.5		37	53	85	139	175	218	260	323
Medium Grain Fertilizers	540	34	2.5	85	122	175	329	467	597	739	825	945
			5	51	73	105	170	236	303	376	417	478
			7.5	43	62	73	113	163	198	253	286	325
Fine Grain Fertilizers	540	26	2.5	60	85	122	204	340	440	551	647	770
			5	32	46	61	108	178	224	280	324	396
			7.5	21	30	41	93	122	153	193	220	263
Ammonium Nitrate	540	33	2.5		61	226	377	563	724	896	1052	1242
			5		28	116	190	284	366	448	525	622
			7.5		23	74	124	191	244	298	352	422
Urea (Carbamide)	540	28	2.5	77	110	303	458	669	818	1004	1171	
			5	41	59	150	231	300	411	500	590	
			7.5	26	37	100	150	221	275	336	392	

NOTE:

Spread widths of fertilizer will vary according to type.
Always check actual spread width and application rate.

NOTE:

Spread Chart settings are approximate - always make trial run to check actual application rate.

WARNING

1. Be sure spinner is stopped during hitching.
2. Always keep away from rotating spinner.
3. Never work on top of or inside the hopper unless tractor engine is shut off.

101023

 DANGER



**ROTATING DRIVELINE
CONTACT CAN CAUSE DEATH
KEEP AWAY!**

DO NOT OPERATE WITHOUT —

- ALL DRIVELINE, TRACTOR AND EQUIPMENT SHIELDS IN PLACE
- DRIVELINES SECURELY ATTACHED AT BOTH ENDS
- DRIVELINE SHIELDS THAT TURN FREELY ON DRIVELINE

Part No. 101081

SPREADING CHART FOR SEED

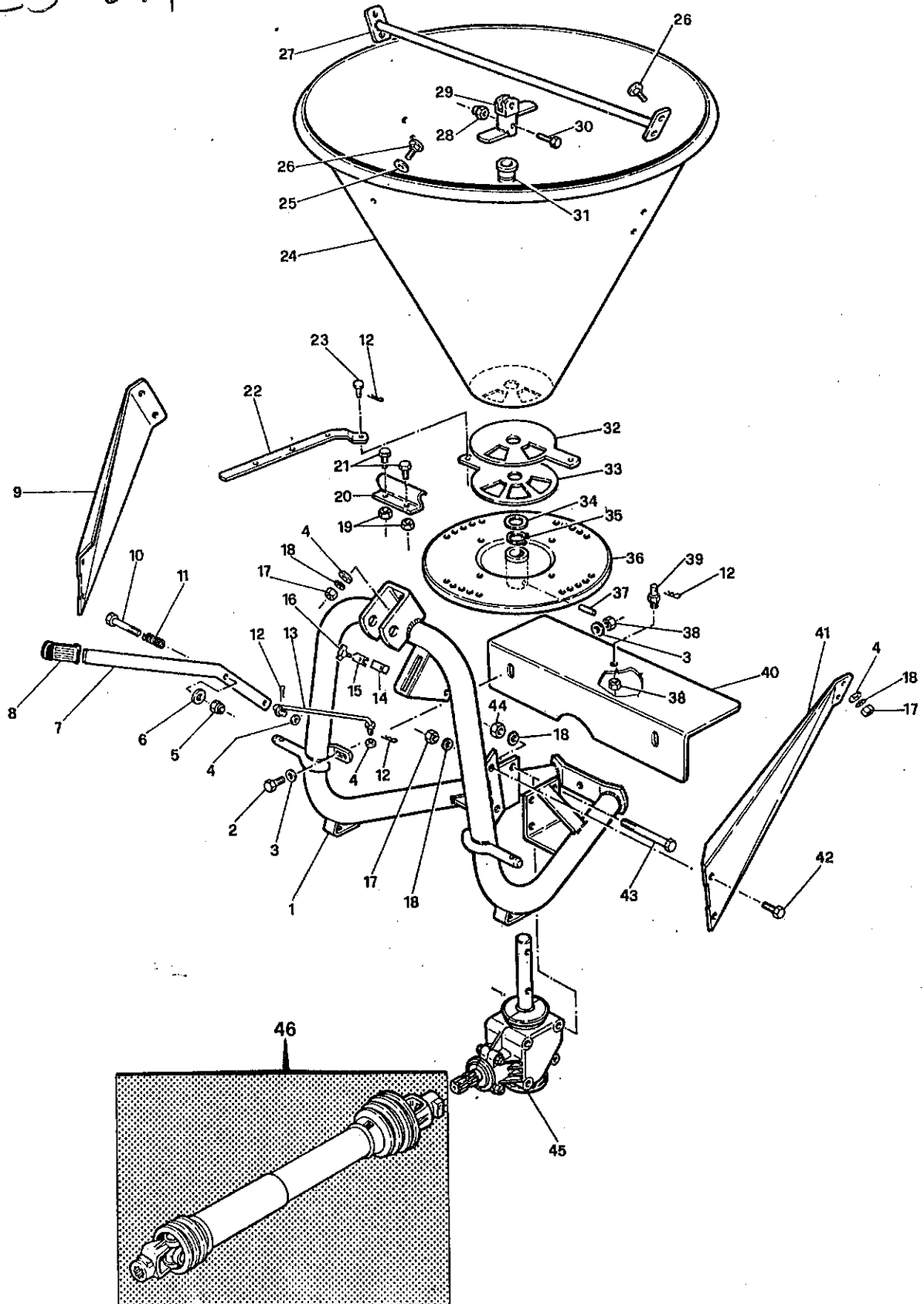
MATERIAL	SPREAD WIDTH IN FEET	TRACTOR SPEED (MPH)	POUNDS PER ACRE (APPROXIMATE) AT CONTROL LEVER SETTING INDICATED							
			1.5	2	2.5	3	3.5	4	4.5	5
Alfalfa & Clover	26	4	14	48	118					
		5	11	39	95					
		6	9	32	79					
		7.5	7.5	26	63					
Barley	28	4				90	107	151	186	
		5				72	86	121	149	
		6				60	71	100	124	
		7.5				48	57	81	99	
Bluegrass & Bermuda Grass	18	4		20.5	72					
		5		16.5	45					
		6		13.5	36					
		7.5		11	24					
Brome Grass	10	4		7	12	19				
		5		6	9.5	15				
		6		5	8	12				
		7.5		4	6	10				
Fescue & Ryegrass	18	4		11	34	74				
		5		9	27	59				
		6		7.5	22	49				
		7.5		6	18	39				
Lespedeza	32	4	5	11	22					
		5	3.5	9	18					
		6	3	7.5	15					
		7.5	2.4	6	12					
Oats	28	4			45	71	131			
		5			36	57	105			
		6			30	48	87			
		7.5			24	38	70			
Orchard Grass	12	4		14	21					
		5		11	17					
		6		9	14					
		7.5		7	11					
Rice	33	4			87	140	253			
		5			70	112	203			
		6			58	93	169			
		7.5			47	75	135			
Rye	33	4				86	135	186	227	
		5				69	109	149	182	
		6				57	90	124	151	
		7.5				46	72	99	121	
Sudan Grass	33	4		37	58	92				
		5		30	47	74				
		6		25	39	61				
		7.5		20	31	49				
Soybeans	40	4					127	150	170	200
		5					102	120	136	160
		6					85	100	113	133
		7.5					68	80	90	106
Wheat	33	4			70	111	151	198		
		5			56	89	121	159		
		6			46	74	100	147		
		7.5			37	59	80	106		

NOTE: Spread Chart settings are approximate - always make a trial run to check actual application rate.

NOTE: Material can vary as to density, foreign material content, particle size and shape. These factors will affect both spread width and flow rate.

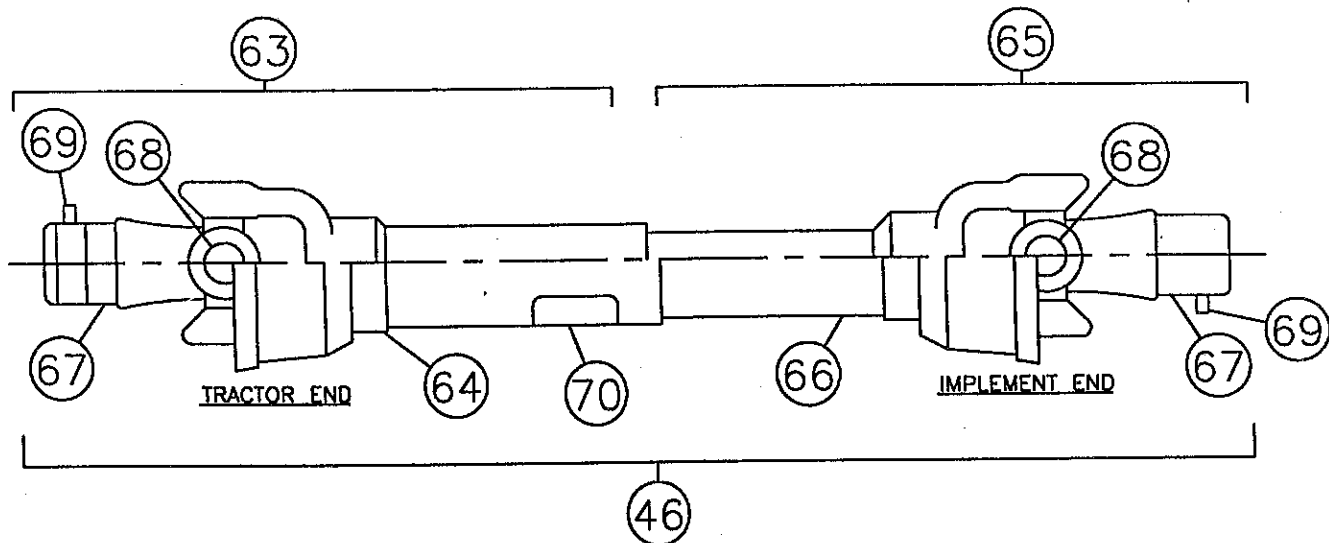
EXPLODED PARTS DRAWING FOR CS SERIES SPREADERS

CS-1094
CS-694



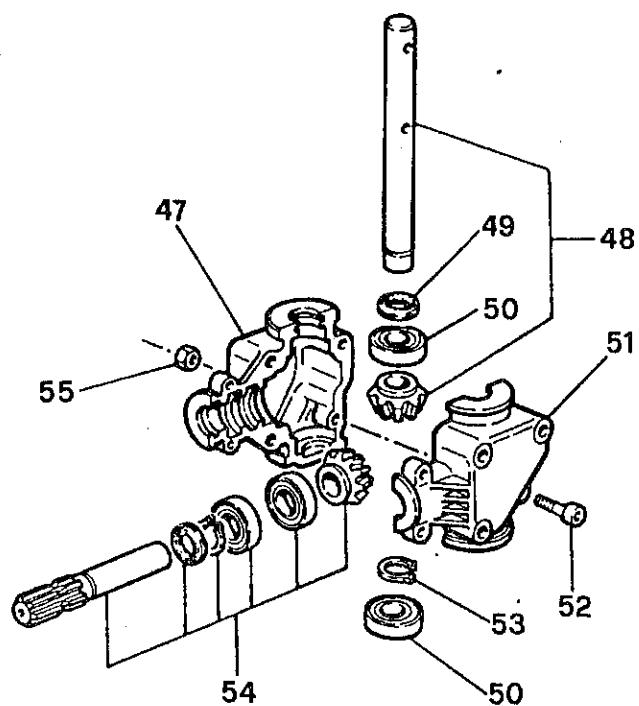
REPAIR PARTS FOR CS SERIES SEEDER/SPREADERS

REF. NO.	PART NO.	DESCRIPTION	NO. REQ.
1	420701	Frame, XA	1
2	420702	Bolt, Hex Head, M8 x 20, Zinc	2
3	420703	Washer, Flat, 8mm, Zinc	4
4	420704	Washer, Flat, 10mm, Zinc	7
5	420705	Nut, Self-locking, M10, Zinc	1
6	420706	Washer, Bakelite	1
7	420707	Lever, Adjustment	1
8	420708	Handle, Rubber, 8 x 20	1
9	420709	Brace, Right	1
10	420710	Bolt, Hex Head, M10 x 65, Zinc	1
11	420711	Spring, Pressure	1
12	420712	Hairpin	4
13	420713	Rod, Flow Adjustment	1
14	420714	Block, Fixing	1
15	420715	Indicator	1
16	420716	Screw, Wing, M6 x 16, Zinc	1
17	420717	Nut, Hex, M10, Zinc	9
18	420718	Washer, Lock, 10mm, Zinc	12
19	420719	Nut, Hex, M8	8
20	420720	Vane, Fan	4
21	420721	Bolt, Hex Head, M8 x 16	8
22	420722	Rod, Selector, RX-LX	1
23	420723	Pin, Connection	1
24	420724	Hopper, Steel 250 (6 bu.)	1
24	420758	Hopper, Steel 400 (10 bu.)	1
24	420726	Hopper, Poly 400 (10 bu.)	1
24	420841	Hopper, Poly 250 (6 bu.)	1
25	420727	Washer, for Hopper	1
26	420728	Bolt, Carriage Head, M10 x 25, Zinc	5
27	420729	Bar, Hopper Reinforcement	1
28	420730	Nut, Self-locking, M8, Zinc	1
29	420731	Agitator	1
30	420732	Bolt, Hex Head, M8 x 45, Zinc	1
31	420733	Guide Bushing, Agitator	1
32	420734	Seed Disc, Upper (2 holes)*	1
33	420735	Distribution Disc, Lower (3 holes)	1
34	420736	Washer, Special	1
35	420737	Snap Ring, D.32 E	1
36	420738	Spreading Disc (Spinner)*	1
37	420739	Roll Pin (Special Double)	1
38	420719	Nut, Hex, M8, Zinc	3
39	420741	Pin, Adjustment	1
40	420742	Guard	1
41	420743	Brace, Left	1
42	420744	Bolt, Hex, M10 x 25, Zinc	4
43	420745	Bolt, Hex, M10 x 100, Zinc	3
44	420717	Nut, Hex, M10, Zinc	3
45	420747	Gearbox, 3-Hole (Complete)	1
46	420748	PTO Assembly (Complete)	1



PTO COMPONENTS

REF. NO.	PART NO.	DESCRIPTION	NO. REQ.
46	420748	PTO Assembly, complete	1
63	420764	PTO Half, tractor end	1
64	420765	Plastic Shield Assembly, outer	1
65	420766	PTO Half, implement end	1
66	420767	Plastic Shield Assembly, inner	1
67	170804	Yoke, 1 $\frac{1}{2}$ -6B spline	2
68	3814091	PTO Cross Repair Kit	2
69	170806	Push Pin Repair Kit, yoke	2
70	101081	Decal, Driveline Entanglement	1



GEARBOX COMPONENTS

REF. NO.	PART NO.	DESCRIPTION	NO. REQ.
45	420747	Gearbox, 3-Hole (Complete)	1
47	420749	Gearbox Half, Right Hand	1
48	420750	Shaft, Output Assembly	1
49	420751	Oil Seal, 25 x 37 x 5	1
50	420752	Bearing, 6205	2
51	420753	Gearbox Half, Left Hand	1
52	420732	Bolt, Hex Head, M8 x 45	3
53	420755	Snap Ring, D.25 E	1
54	420756	Shaft, Input Assembly	1
55	420719	Nut, Hex, M8	3

OPTIONAL AGITATOR COMPONENTS

REF. NO.	PART NO.	DESCRIPTION	NO. REQ.
56	420725	Agitator, Complete	1
57	420759	Wheel, Agitator	1
58	420760	Washer, Flat, M12	2
59	420761	Nut, Self-locking, M12, Zinc	1
60	420710	Bolt, Hex Head, M10 x 65, Zinc	1
61	420717	Nut, Hex, M10, Zinc	1

